

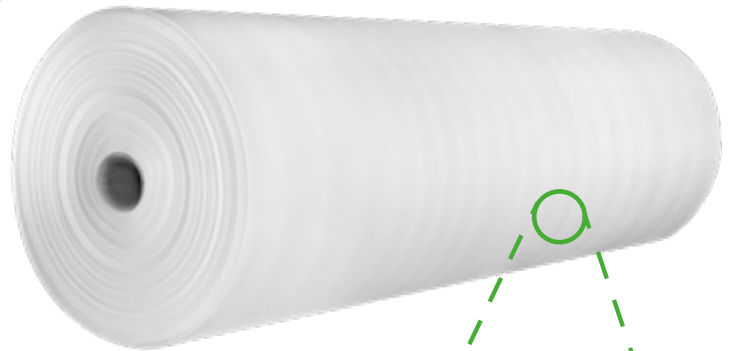
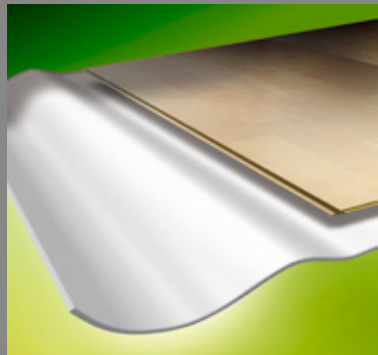


PE FOAM ROLL UNDERLAYMENT

It is a light and flexible material used as a base for leveling wooden floors and interior carpets, as well as giving them extra adherence, protecting them and helping to absorb impacts, noise and humidity. Used in industries such as: construction, decoration, remodeling.

FEATURES:

- Protects from moisture
- Helps insulate noise and impacts
- Floor leveling
- Easy to install



Customizable logo

